

## UPLOADING FIRMWARE UPDATES TO THE SR-112 VIA ETHERNET CABLE ONLY (NO NETWORK)

- June 19, 2012 -

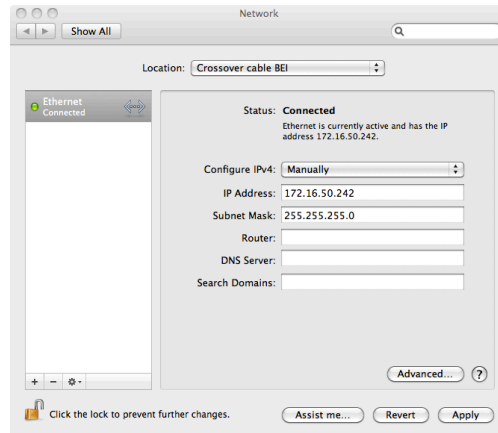
This procedure is used when trouble-shooting uploading problems with the SR-112.

### 1. CONNECT YOUR SR-112 TO THE COMPUTER

- Using an Ethernet Crossover Cable, connect your SR-112 directly to your computer

### 2. SET UP YOUR COMPUTER'S NETWORK PREFERENCES

- In your network preferences, under Ethernet select 'MANUALLY'
- Enter an IP address for your computer (172.16.50.242)
- Enter a Subnet Mask (255.255.255.0)



### 3. CHANGE THE SR-112's NETWORK SETTINGS

- Turn DHCP off (menu 91)
- Enter an IP Address (172.16.50.241 - menu 92)
- Enter an IP Mask (255.255.255.0 - menu 93)
- Enter an IP Gateway (172.16.50.1 - menu 94)

### 4. POINT YOUR BROWSER

- Enter the SR-112's IP address in your browser. You should see the Loader page.

You can now upload firmware to your SR-112.

